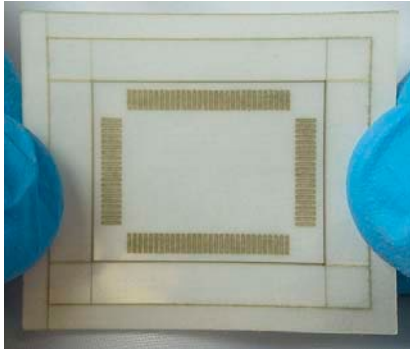


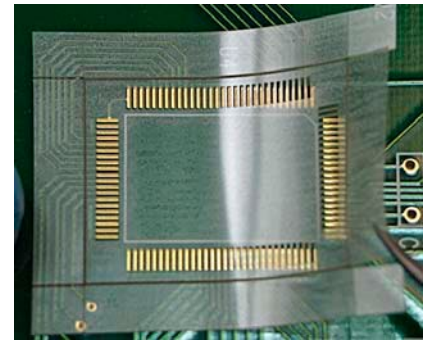
STIKNPEEL™ USER INSTRUCTIONS



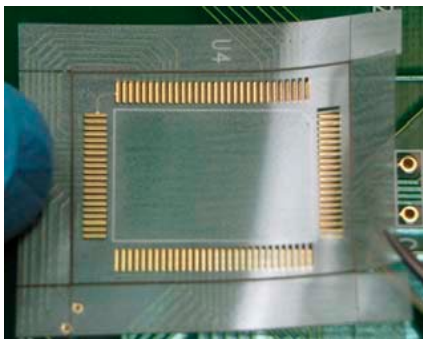
STEP 1
Examine the stencil to make sure that it fits the land patterns on the PCB. Make sure site is wicked (if reworked) and cleaned.



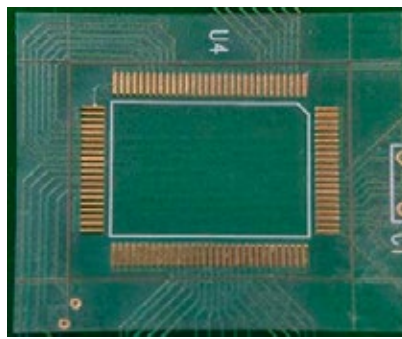
STEP 2
From the corner work the stencil off the backing material.



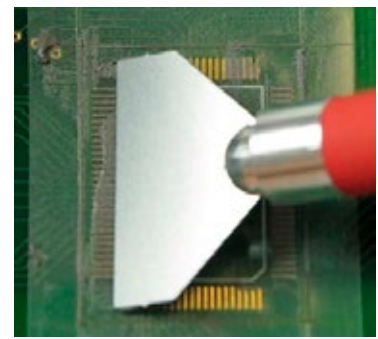
STEP 3
Once the stencil has been peeled off the release liner begin aligning at a corner of the pattern and "work" the alignment slowly in X and Y over the land patterns.



STEP 4
Finish aligning and placing the stencil.



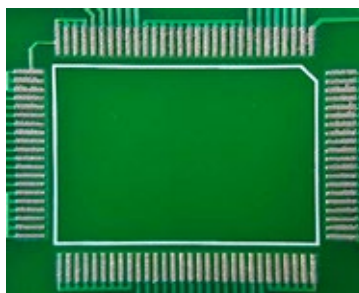
STEP 5
Once aligned and place insure that the hole patterns in the stencil align with the land patterns on the board. Make the board or solder "fence around the pattern by folding up the sides.



STEP 6
Inspect to make sure the "bumps" are uniform and consistent on all of the pads.



STEP 7
Pull off the stencil carefully making sure no solder paste is accidentally smeared on neighboring areas of the board/parts. Discard stencil.



STEP 8
Inspect solder paste. You are now ready to place the part.